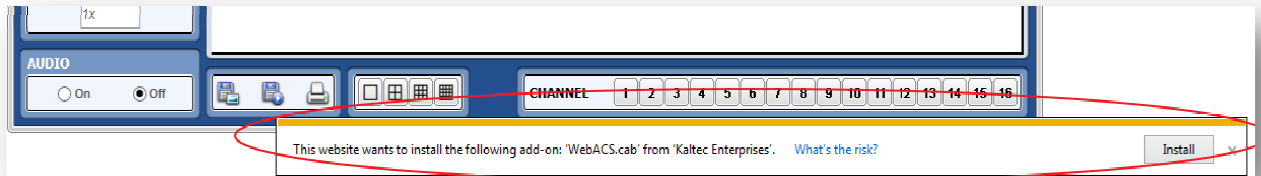


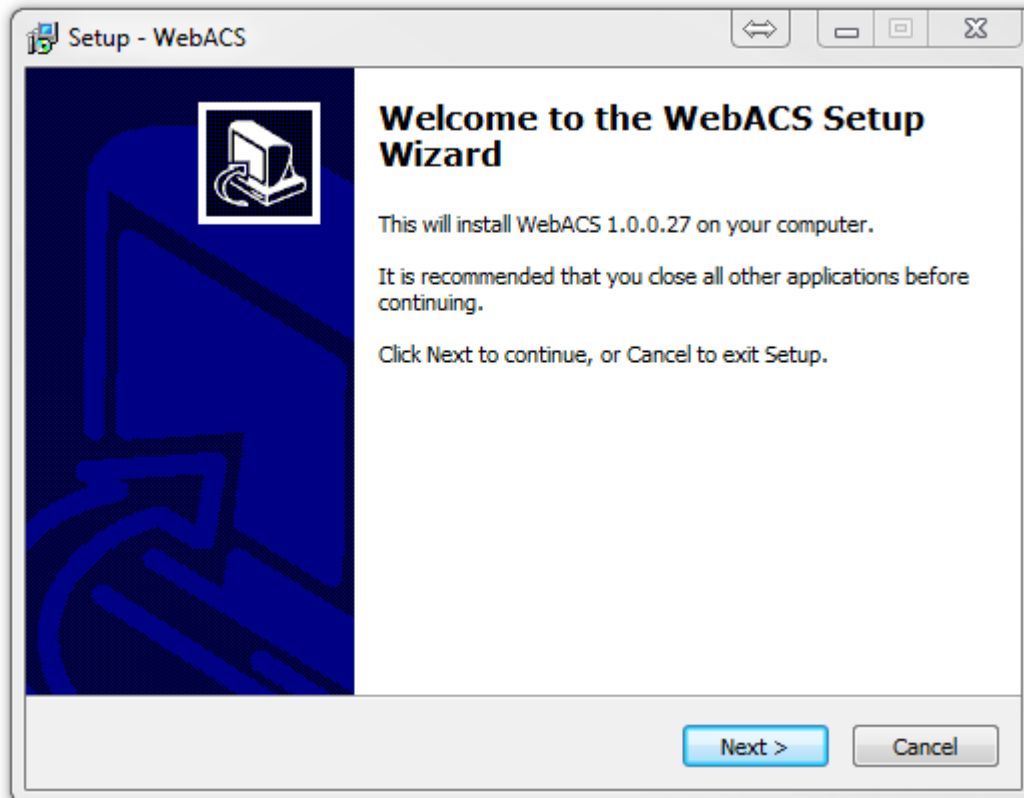
# How To Connect to Your Digital Watchdog DVR in Internet Explorer

---

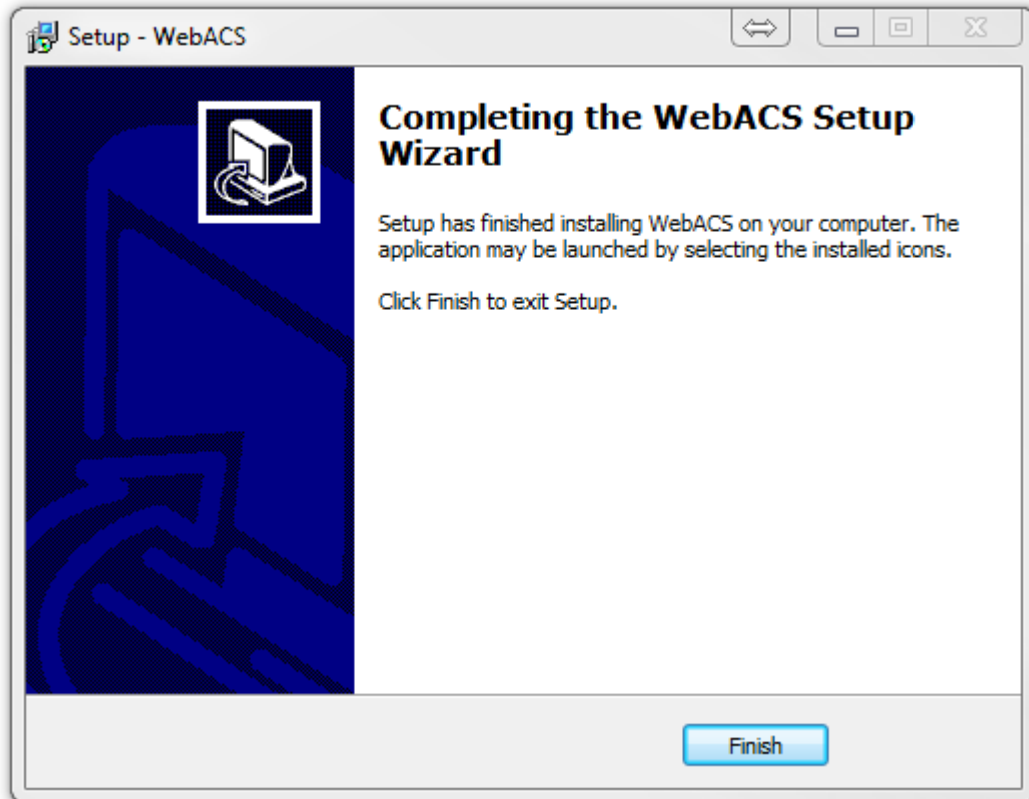
1. Open Internet Explorer and browse to the address of your DVR (contact Security Central if you do not know your address)
2. Log in using your username and password (contact Security Central if you do not know your login information)
3. You will see a prompt to install an Add On (on newer versions of Internet Explorer, this will appear on the bottom. Older versions of Internet Explorer, it will appear at top). Click Install to begin:



4. Another window will open (check the taskbar at the bottom of your screen if you don't see it). To install the WebACS Add On, click Next on the following:



5. At the end:



6. There may be one last permission check before the cameras can connect -- if you don't see the grid view screen pop up, look at the task bar on the bottom of your screen to see if there is a flashing User Account Control window:



If so, click 'Yes' to grant permission.

7. Click Connect in the top left of the screen to view all cameras:

The screenshot displays the VMAX Web Viewer interface. At the top left, there are radio buttons for 'Live View' and 'Search', and buttons for 'Connect' and 'Disconnect'. A red arrow points to the 'Connect' button. Below these are PTZ controls, including a directional pad and a 'Preset' dropdown menu. Further down is a 'TIME SEARCH' section with a search box and time selection options. At the bottom left is a 'PLAYBACK' section with playback controls and a '1x' speed selector. At the bottom is an 'AUDIO' section with 'On' and 'Off' radio buttons. The main area is a 4x4 grid of camera feeds, labeled [01] through [16]. Each feed shows a black screen with the 'DIGITAL WATCHDOG' logo. A yellow border highlights the top-left camera feed [01]. At the bottom right, there is a 'CHANNEL' selector with buttons for 1 through 16. A large red arrow points upwards from the bottom of the screenshot.

You can also select how many cameras you would like to appear in the grid by select the 1, 4, 9, or 16 channel grid.